

GENAN INTAKE

Striving for
a sustainable future



TYRES YES, PLEASE!



**PASSENGER CAR TYRES,
LORRY TYRES,
MOTORBIKE TYRES
OR TRACTOR TYRES
- WITHOUT RIMS**



**CLEAN
CONTAINERS**
without stones,
wood chips or
similar foreign
objects



OTHER TYRE TYPES NO, THANK YOU!



**TYRES WITH RIMS OR
OTHER METAL OBJECTS**
Tyres with e.g. swing
hangers



**BICYCLE TYRES
or wheelbarrow
tyres**

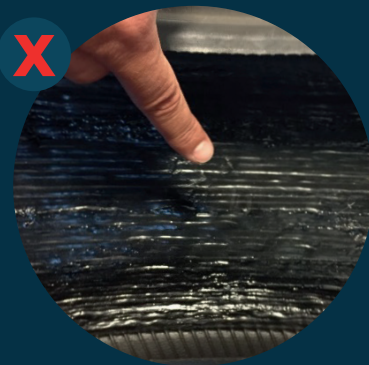


RUBBER BELTS
Caterpillar tracks
and conveyor belts

ALL RUBBER WASTE
e.g. rubber mats, inner
tubes, elastic bands etc.
- apart from passenger
car tyres, lorry tyres,
motorbike tyres and
tractor tyres



**SELF-SEALING TYRES /
LOW-NOISE TYRES**
- neither passenger car
tyres with self-sealing
sealants or sound-
absorbing foam
nor bus or lorry tyres
with fluid, coloured and
chemical sealant



PAINT OR ALGA
Coloured/painted
tyres, old tyres used for
silage covers or tyres
covered with alga



**DIRTY
CONTAINERS**





WHY?

1 WE DO NOT BURN TYRES - WE RECYCLE THEM

Genan is the largest recycler of end-of-life tyres (ELTs) in the world. Tyres are granulated, and rubber, steel and textile are separated. The processing of rubber results in fractions of clean rubber in different particle sizes – from coarse granules to fine powders.

2 WHAT IS THE RUBBER USED FOR?

ELT rubber can be used for many different applications such as artificial turf pitches (granulate stabilises the straws and improves ball behaviour), asphalt (more durable roads), playgrounds (shock-absorbing surfaces) or in connection with the manufacture of new tyres.

3 THE CLEANER THE TYRES, THE BETTER THE RESULT!

All used tyres delivered to us are to be recycled; – and it is important that they are as clean as possible, so the rubber output can be used as an environment-friendly substitute for natural rubber. We can thus only use clean, “fresh” end-of-life tyres from passenger cars, lorries, motorbikes and tractors. All other types of rubber, tyres or waste will be discarded and sent to a waste deposit. For this, the supplier will be charged. Suppliers may avoid such additional costs by following our terms for the delivery of tyres. Genan does NOT accept **self-sealing tyres**. If we find such tyres (or other of the unacceptable tyre types listed in this folder) among the other tyres delivered to us, we will charge the supplier a **fee of € 25 per tyre** as well as a fee for the **extra sorting** and for the **disposal of such tyres**.