

# GENAN INTAKE

Striving for  
a sustainable future



# TYRES YES, PLEASE!



**PASSENGER CAR TYRES,  
LORRY TYRES,  
MOTORBIKE TYRES  
OR TRACTOR TYRES  
- WITHOUT RIMS**



**CLEAN  
CONTAINERS**  
without stones,  
wood chips or  
similar foreign  
objects



# OTHER TYRE TYPES NO, THANK YOU!



**TYRES WITH RIMS OR  
OTHER METAL OBJECTS**  
Tyres with e.g. swing  
hangers



**BICYCLE TYRES  
or wheelbarrow  
tyres**

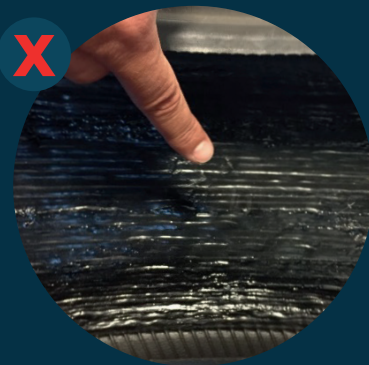


**RUBBER BELTS**  
Caterpillar tracks  
and conveyor belts

**ALL RUBBER WASTE**  
e.g. rubber mats, inner  
tubes, elastic bands etc.  
- apart from passenger  
car tyres, lorry tyres,  
motorbike tyres and  
tractor tyres



**SELF-SEALING TYRES /  
LOW-NOISE TYRES**  
- neither passenger car  
tyres with self-sealing  
sealants or sound-  
absorbing foam  
nor bus or lorry tyres  
with fluid, coloured and  
chemical sealant



**PAINT OR ALGA**  
Coloured/painted  
tyres, old tyres used for  
silage covers or tyres  
covered with alga



**DIRTY  
CONTAINERS**







# WHY?

1

## WE DO NOT BURN TYRES - WE RECYCLE THEM

Genan is the largest recycler of end-of-life tyres (ELTs) in the world. Tyres are granulated, and rubber, steel and textile are separated. The processing of rubber results in fractions of clean rubber in different particle sizes – from coarse granules to fine powders.

2

## WHAT IS THE RUBBER USED FOR?

ELT rubber can be used for many different applications such as artificial turf pitches (granulate stabilises the straws and improves ball behaviour), asphalt (more durable roads), playgrounds (shock-absorbing surfaces) or in connection with the manufacture of new tyres.

3

## THE CLEANER THE TYRES, THE BETTER THE RESULT!

All used tyres delivered to us are to be recycled; – and it is important that they are as clean as possible, so the rubber output can be used as an environment-friendly substitute for natural rubber. We can thus only use clean, “fresh” end-of-life tyres from passenger cars, lorries, motorbikes and tractors. All other types of rubber, tyres or waste will be discarded and sent to a waste deposit. For this, the supplier will be charged. Suppliers may avoid such additional costs by following our terms for the delivery of tyres. Genan does NOT accept **self-sealing tyres**. If we find such tyres (or other of the unacceptable tyre types listed in this folder) among the other tyres delivered to us, we will charge the supplier a **fee of €25 per tyre** as well as a fee for the **extra sorting** and for the **disposal of such tyres**.

[WWW.GENAN.COM](http://WWW.GENAN.COM)