

GENAN INTAKE

Striving for
a sustainable future



TYRES & RIMS YES, PLEASE!



PASSENGER CAR TYRES, LORRY TYRES, MOTORBIKE TYRES OR TRACTOR TYRES - WITH OR WITHOUT RIMS



CLEAN CONTAINERS
without stones, wood chips or similar foreign objects



WELLINGTONS NO, THANK YOU!



METAL BRACKETS
Tyres with e.g. swing hangers



BICYCLE OR MOPED TYRES

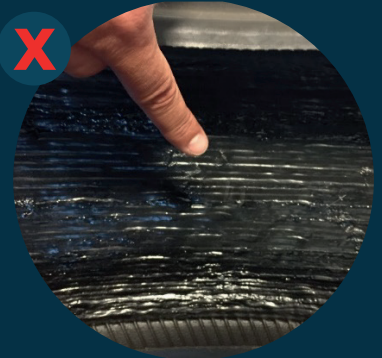


RUBBER BELTS
Caterpillar tracks and conveyor belts

ALL RUBBER WASTE
- apart from passenger car tyres, lorry tyres, motorbike tyres or tractor tyres



PUNCTURE-PROOF TYRES
- neither passenger car tyres with thick, sticky lining, nor bus or lorry tyres with thin, coloured sealant



PAINT OR ALGA
Coloured/painted tyres, old tyres used for silage covers or tyres covered with alga



DIRTY CONTAINERS



If in doubt, please call the logistics department at your local Genan plant for guidance.
Find relevant contact details at www.genan.com



WHY?

1

WE DO NOT BURN TYRES - WE RECYCLE THEM

Genan is the largest recycler of end-of-life tyres (ELTs) in the world. Tyres are granulated, and rubber, steel and textile are separated. The processing of rubber results in fractions of clean rubber in different particle sizes – from coarse granules to fine powders.

2

WHAT IS THE RUBBER USED FOR?

ELT rubber can be used for many different applications such as artificial turf pitches (granulate stabilises the straws and improves ball behaviour), asphalt (more durable roads), playgrounds (shock-absorbing surfaces) or in connection with the manufacture of new tyres.

3

THE CLEANER THE TYRES, THE BETTER THE RESULT!

All used tyres delivered to us are to be recycled; – and it is important that they are as clean as possible, so the rubber output can be used as an environment-friendly substitute for natural rubber. We can thus only use clean, “fresh” end-of-life tyres and rims from passenger cars, lorries and tractors. All other types of rubber, tyres or waste will be discarded and sent to a waste deposit. For this, the supplier will be charged. Suppliers may avoid such additional costs by following our terms for the delivery of tyres. Genan does NOT accept self-sealing tyres. If we find such tyres (or other of the unacceptable tyre types listed in this folder) among the other tyres delivered to us, we will charge the supplier a fee per tyre as well as a fee for the extra sorting and for the disposal of such tyres.

WWW.GENAN.COM